

This drawing may contain: Ordnance Survey material by permission of Ordnance Survey on behalf of the Controller of Her Majesty's Stationery Office © Crown Copyright 2019. All rights reserved. Reference number 0100031673.

PROJECT TITLE
Southend United - Fossetts Farm

OS Open data / © Natural England / © DEFRA / © DECC / © English Heritage.
Aerial Photography - ESRI, DigitalGlobe, GEOEye, i-cubed, USDA FSA, USGS, AEX,
Getmapping, Aerogrid, IGN, IGP, swisstopo, the GIS User Community

REV.	DESCRIPTION	APP. DATE
03	Issued for Planning - Consultation Amendments	MW 16.03.21
ISSUED BY	London	T: 020 7467 1470
DATE	17 Sept 2020	DRAWN AK
SCALE@A3	1:2,000	CHECKED NB
STATUS	Planning	APPROVED MW

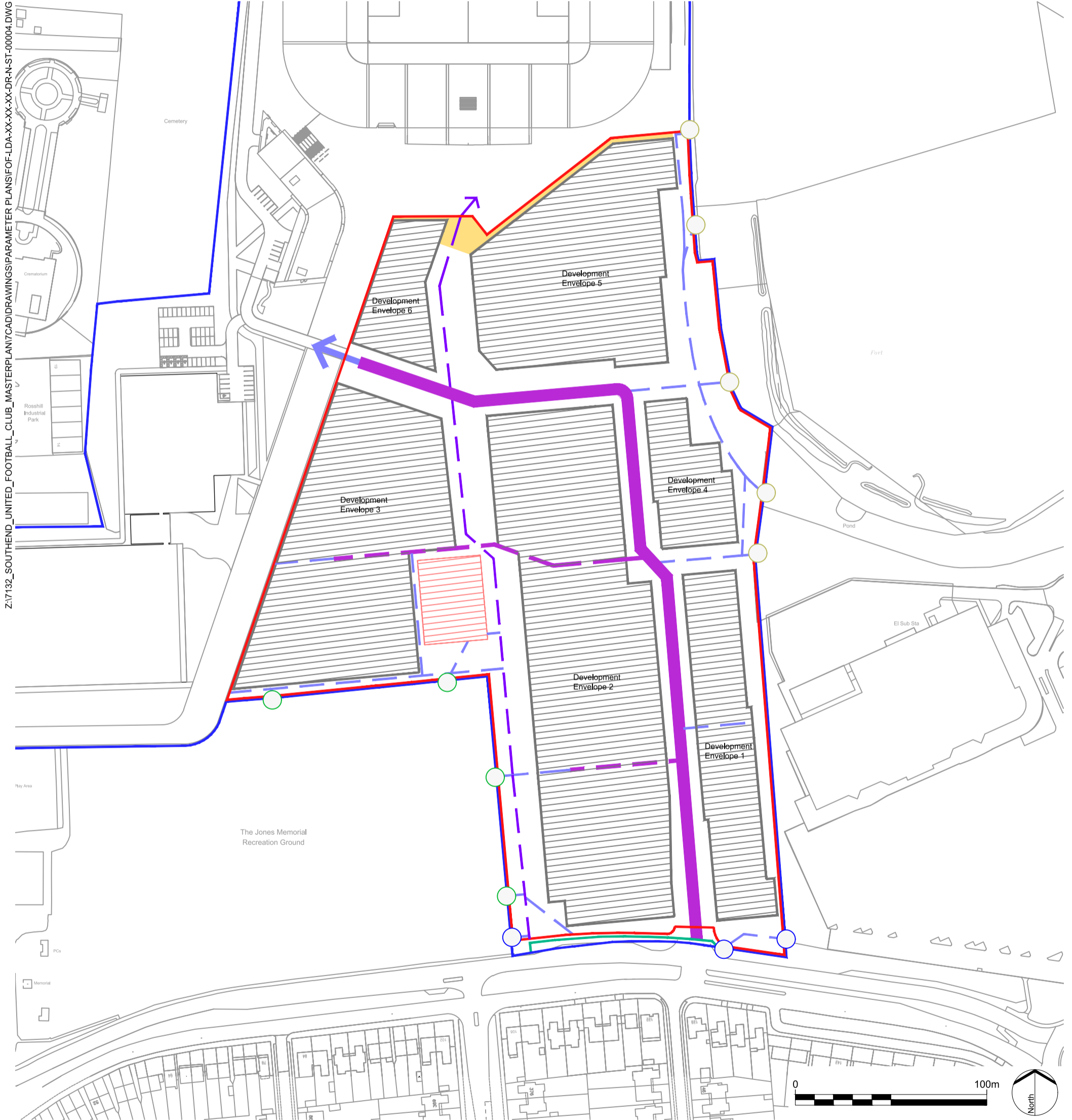
No dimensions are to be scaled from this drawing.
All dimensions are to be checked on site.
Area measurements for indicative purposes only.

DRAWING TITLE
Pedestrian & Cycle Access Parameter Plan

© LDA Design Consulting Ltd. Quality Assured to BS EN ISO 9001 : 2015

DWG. NO
FOF-LDA-XX-XX-XX-DR-N-ST-00004

Sources Ordnance Survey



LEGEND

Outline Area of Hybrid Planning Application	Pedestrian Access Point to be coordinated with Eastern Avenue and adjacent properties
Hybrid Planning Application Boundary	Pedestrian Access Point to be coordinated with Jones Memorial Ground
Development Envelope	Pedestrian Access Point to be coordinated with schedule monument and scheduled monument management plan
Jones Memorial Ground Parking	Primary Street with shared pedestrian and cycle access routes within the street layout
Public realm to be integrated with the plaza to the south of the proposed Football Stadium	Secondary Street with pedestrian footways and cycling within the carriageway

Pedestrian and cycle access route to be coordinated with the future alignment of the Primary Street in accordance with the vehicle access parameter plan
Eastern Avenue - shared pedestrian and cycle route as per detailed drawings
Shared pedestrian pathway & cycle route within Public Open Space. Route to have a tolerance of up to 7.5 metres variance in either direction from the identified centre line
Pedestrian Access Route. Route to have tolerance of up to 15 metres variance in either direction from the identified centre line

- Notes**
1. The identified routes within the Primary and Secondary Streets are to be located in accordance with the Vehicle Access Parameter Plan and integrated within their future street layout.
 2. Pedestrian access between the Jones Memorial Ground Parking and the Jones Memorial Ground must be provided.
 3. Pedestrian access point locations connecting to the adjacent context are to be coordinated during future reserved matters applications. The access point locations are to be coordinated with the identified routes and may vary with a tolerance of up to 15 metres variance in either direction to support their future coordination.